



THE LONG TABLE

The Long Table is a restaurant that strives to answer the question of

'What if everyone in our community has access to great food and people to eat it with?'

We make sure that amazing chefs get to create delicious meals using the best local ingredients and make these all Pay As You Can. Our home creates a space for all by showing radical hospitality and allowing community to have space to grow.

Amazing things happen when we eat together.

This year we fully reopened our community canteen in our new home at Brimscombe Mills – and what a year its been eating together again.

MEALS AT OUR TABLE

26,034

26,034 people ate a pay-as-you-can meal at our table

42% of these meals were paid below what it cost us to make the meals

42%

1,249

1,249 paid forward meals bought by customers for someone else to redeem.

1,694

1,694 people claimed a meal paid forward by someone else

LOCAL COMMUNITY CAFES WE SUPPORT

Eating with us and paying what you can means we fund chefs and all the food they cook with in communities around Stroud.

4 4 community cafes funded.

2,127 people ate together at one of the community cafes we support.

2,127

2,040

2,040 freezer of love meals were fully funded in five communities.



YOUNG MINDS COOKING WILD

14

14 inner city school children joined us for an outdoor culinary adventure. With fire pit cooking, delicious food and a focus on fun and well-being.





"SO WELCOMING AND GENUINE! SO HAPPY WE FOUND THIS WONDERFUL GEM"

Brimscombe Mills customer

FOOD WASTE

3.32 tonnes

3.32 tonnes of food repurposed back into meals that would have entered the food waste system. This is the equivalent weight of almost 3 and a half orca whales.

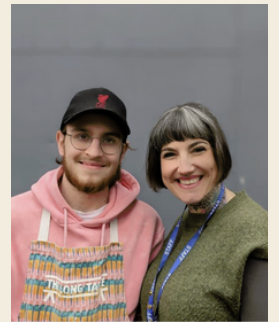
In addition our Ridan bio digester turns our own green waste back into compost that we use for growing on site.



OUR TEAM

17,704

Hours of paid employment. We are proud that we pay every member of our team living wage and above. Most importantly we acknowledge that not everyone wants full time work and so we produce jobs that fit around our staff's family and personal situations.



"CAN'T HONESTLY THANK YOU ALL ENOUGH. BEING ON MAT LEAVE CAN BE SO LONELY AND HARD, AND I CAME TODAY REALLY FOR A DRIVE TO TRY AND GET LITTLE ONE TO SLEEP AND SEE IF YOU HAD ANY BABY TEETHING TOYS WHICH MIGHT HELP.

WHEN GOT THERE I WAS JUST SO OVERWHELMED WITH THE KINDNESS FROM EVERYONE, IT DID SO MUCH GOOD FOR MY MENTAL HEALTH. IT IS SUCH A HIDDEN LITTLE PARADISE, THE LIGHTS, MUSIC AND LONG TABLE JUST MAKE IT FEEL SO HOMELY.

ALL THE LITTLE NOTES OF LOVE AND SUPPORT AROUND. JUST WISH MORE PLACES LIKE YOURS EXIST. HADN'T EATEN OR SLEPT PROPERLY FOR WHAT FEELS LIKE MONTHS AND JUST A CHANCE TO SIT DOWN SOMEWHERE NON JUDGMENTAL WITH SOME HOT FOOD WAS JUST SO NICE. FINANCIALLY, MAT LEAVE PUTS YOU IN A REALLY TRICKY SPOT BECAUSE EVERYWHERE YOU GO IS ALWAYS SO EXPENSIVE AND STATUTORY MAY PAY GOES NOWHERE"

Brimscombe Mills customer